

72 DISASSEMBLY

Table 3 Drive Shaft Gear Chart

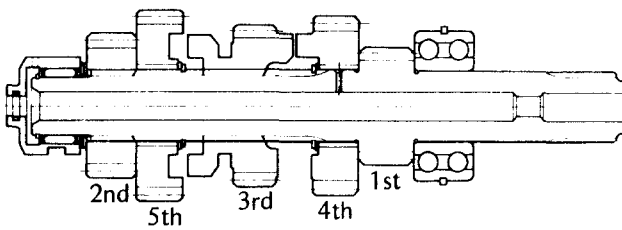
	Gear	Engage Type	No. of Teeth
Sequence	1	Part of drive shaft	13
	4	Dogs, dogs face left	25
Installation	3	Double dogged, tooth side dogs face right	22
	5	Dog recesses, recessed side faces right	27
	2	No dogs, no dog recesses, chamfered side faces right	19

6. The drive shaft gears can be recognized by size, the gear with the smallest diameter being 1st gear, and the largest one being 5th gear.

Circlip, Splined Washer Installation onto Output Shaft

Circlip Groove

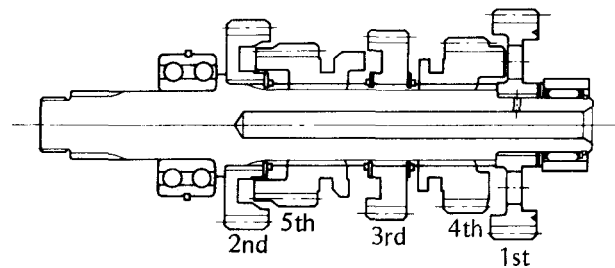
Drive Shaft Gears



4. Be sure that all parts are put back in the correct sequence and all circlips and splined washers are properly in place. Proper sequence starting with the engine sprocket side is 2nd gear, splined washer, circlip, 5th gear, circlip, splined washer, 3rd gear, splined washer, circlip, 4th gear, 1st gear, copper washer, steel washer, needle bearing, circlip, and needle bearing outer race.

5. The output shaft gear sizes are opposite from those of the drive shaft gears, the largest being 1st gear and the smallest, 5th gear.

Output Shaft Gears



Output Shaft Disassembly:

- Pull off the needle bearing outer race (62).
- Remove the circlip 61 and pull off the needle bearing (60), steel washer 59, and copper washer (58).
- Pull off 1st gear (57) and 4th gear 56.
- Remove the circlip 55 and pull off the splined washer 54, 3rd gear (53) and another splined washer (52).
- Remove the circlip 51 and pull off 5th gear (50).
- Remove the circlip (49) and pull off the splined washer (48) and 2nd gear 47
- Remove the output shaft ball bearing (fusing the stem bearing puller (special tool).

Output Shaft Assembly Notes:

1. Install the output shaft ball bearing using the transmission circlip driver (KZ400 special tool).
2. Replace any circlips that were removed with new ones. Install the circlip so that its opening coincides with one of the splined grooves in the output shaft (Fig. 252).
3. Install the splined washer so that its teeth do not coincide with the circlip opening.

Table 4 Output Shaft Gear Chart

	Gear	Engage Type	No. of Teeth
Sequence	2	Dog recesses, plain side faces left	31
	5	Double dogged, tooth side dogs face left	24
Installation	3	Dog recesses, dog recessed side faces left	28
	4	Dogged, dogged side faces right	26
	1	Dog holes, V grooved side faces right	35