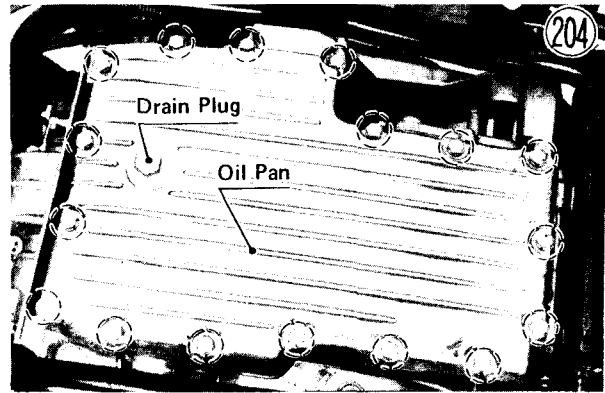
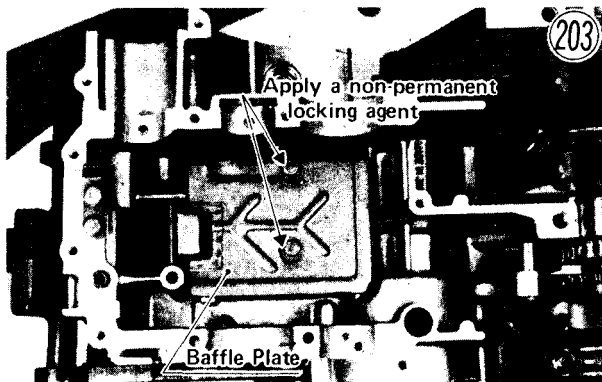


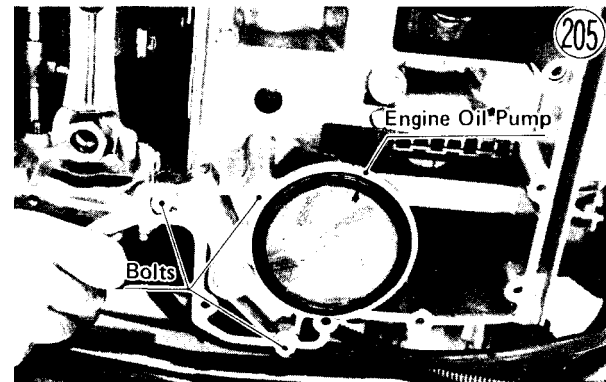
60 DISASSEMBLY

tighten them with 0.5 kg-m (43 in-lbs) of torque.



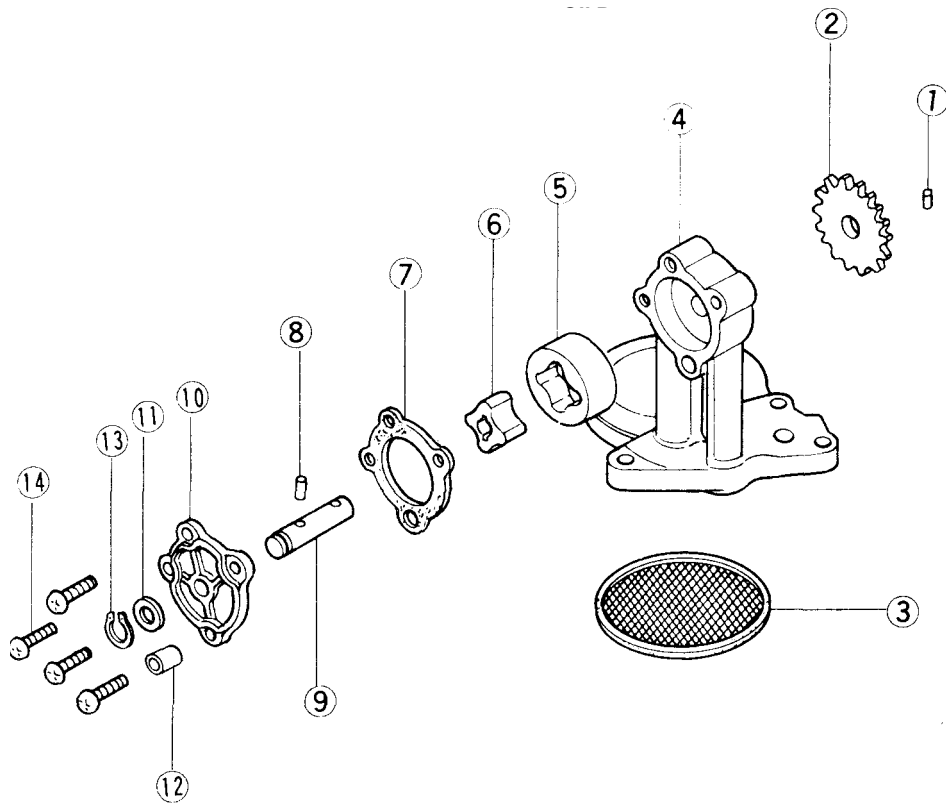
- Remove the engine oil pump bolts (3), and take off the engine oil pump.

ENGINE OIL PUMP



Removal:

- With the motorcycle on its center stand, place an oil pan beneath the engine, and remove the engine oil drain plug to drain out the oil.
- After the oil has drained out, install the drain plug and tighten it with 3 ~ 3.5 kg-m (22 ~ 25 ft-lbs) of torque.
- Remove the mufflers (Pg. 32).
- Remove the oil pan bolts (17), and take off the oil pan and gasket.



1. Pin
2. Pump Gear
3. Screen
4. Pump Body
5. Outer Rotor
6. Inner Rotor
7. Gasket
8. Pin
9. Pump Shaft
10. Pump Cover
11. Washer
12. **Knock** Pin
13. Circlip
14. Pump Cover Screw