

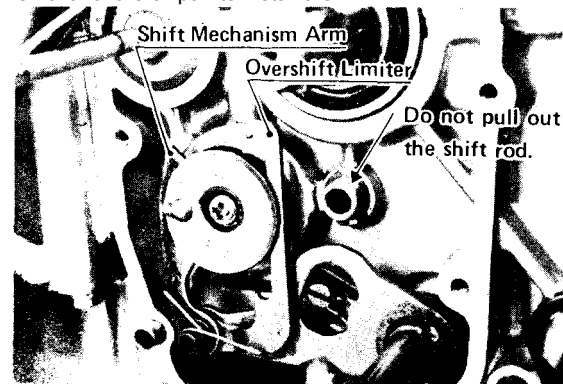
•Unscrew the neutral indicator switch and gasket.

Installation:

- Install the neutral indicator switch and gasket tightening it with 1.3-1.7 kg-m (9.5~12.0ft-lbs) of torque.
- Fit the lead back on the switch.
- Install the engine sprocket cover using the shift shaft, oil seal guide (special tool) to protect the cover oil seal, and tighten its bolts.
- Mount the shift pedal so that its end matches the level of the engine sprocket cover lower left bolt.
- Mount the left foot peg with the nuts and washers.

•Move the shift mechanism arm and overshift limiter

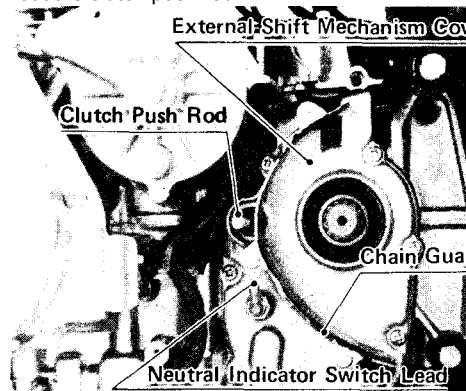
out of their positions on the end of the shift drum, and pull out the external shift mechanism.
NOTE: Do not pull the shift rod more than 40 mm out of the crankcase, or the shift forks inside the crankcase will fall to the bottom of the oil pan, requiring removal of the oil pan to install them.



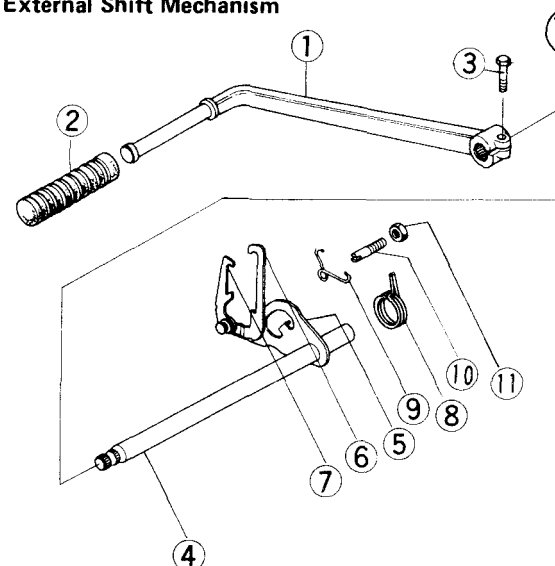
EXTERNAL SHIFT MECHANISM

Removal:

- Remove the engine sprocket (Pg. 55).
- Disconnect the neutral indicator switch lead and pull out the clutch push rod.



External Shift Mechanism



- Remove the engine sprocket chain guard.
- Remove the external shift mechanism cover screws (7), and pull off the external shift mechanism cover and gasket.
- Remove the output shaft collar, using a bearing puller if it is difficult to remove, and take off the O ring.

1. Shift Pedal
2. Pedal F
3. Bolt
4. Shift Sh
5. Shift Le
6. Overshi
7. Shift Mechanism Arm
8. Return Spring
9. Pawl Spring
10. Return Spring Pin
11. Locknut