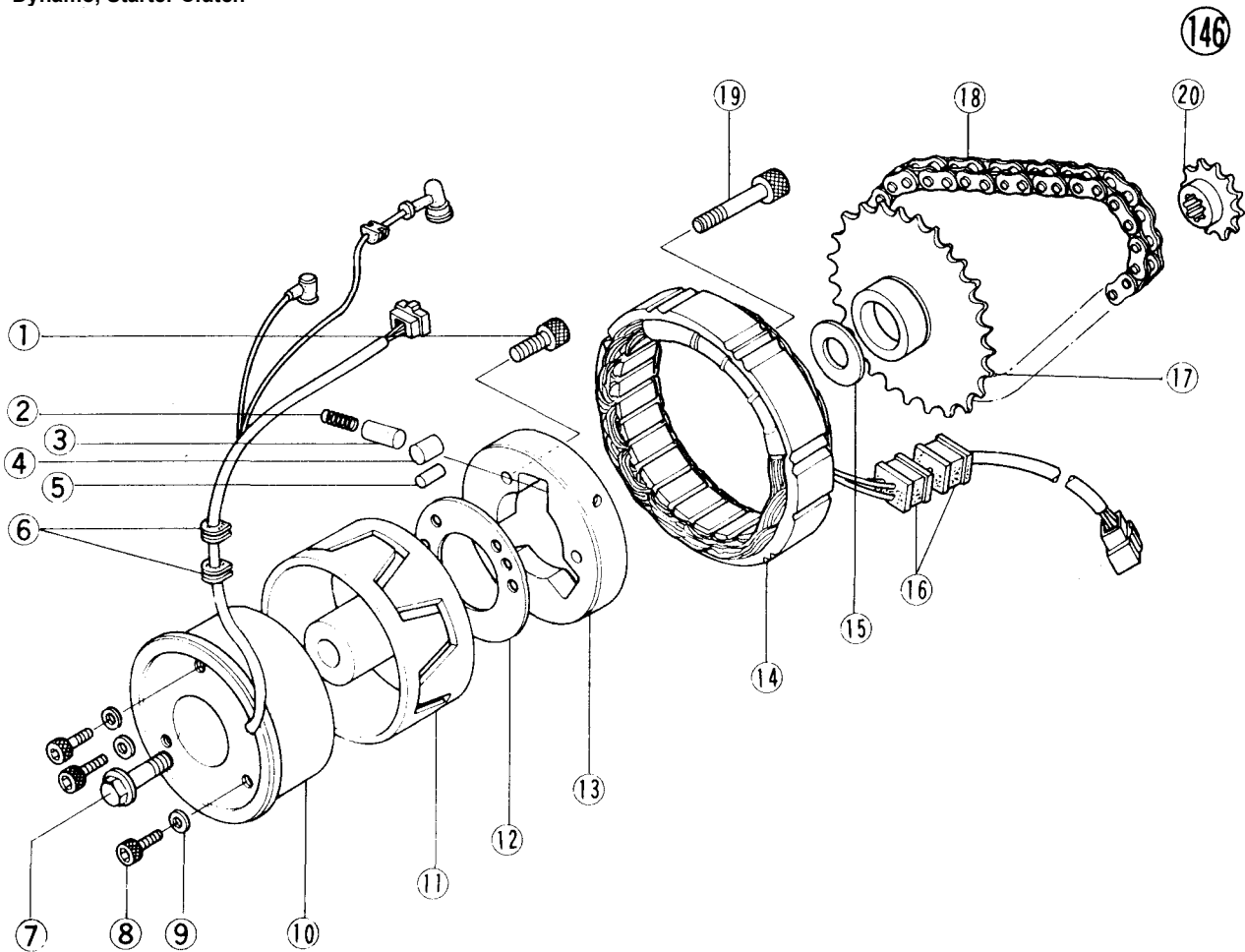


Dynamo, Starter Clutch



- | | |
|---------------------------------------|--------------------------------------|
| 1. Starter Motor Clutch
Allen Bolt | 6. Grommet |
| 2. Spring | 7. Rotor Bolt |
| 3. Spring Cap | 8. Field Coil Mounting
Allen Bolt |
| 4. Roller | 9. Copper Washer |
| 5. Knock Pin | 10. Field Coil |

•Check that knock pins (2) are in place, replace the dynamo cover using a new gasket, and tighten its screws (8).

•Connect the oil pressure indicator switch lead and neutral indicator switch lead.

•Fit the dynamo wiring between the external shift mechanism cover and the crankcase.

- | | |
|--------------------------|-------------------------|
| 11. Dynamo Rotor | 16. Grommet |
| 12. Plate | 17. Sprocket |
| 13. Starter Motor Clutch | 18. Starter Motor Chain |
| 14. Armature | 19. Armature Allen Bolt |
| 15. Thrust Washer | 20. Sprocket |

•Check that knock pins (2) are in place, and install the engine sprocket cover using the shift shaft oil seal guide (special tool) to protect the cover oil seal, and tighten it bolts (4). The wiring is routed in front of the upper mounting bolt spacer.

