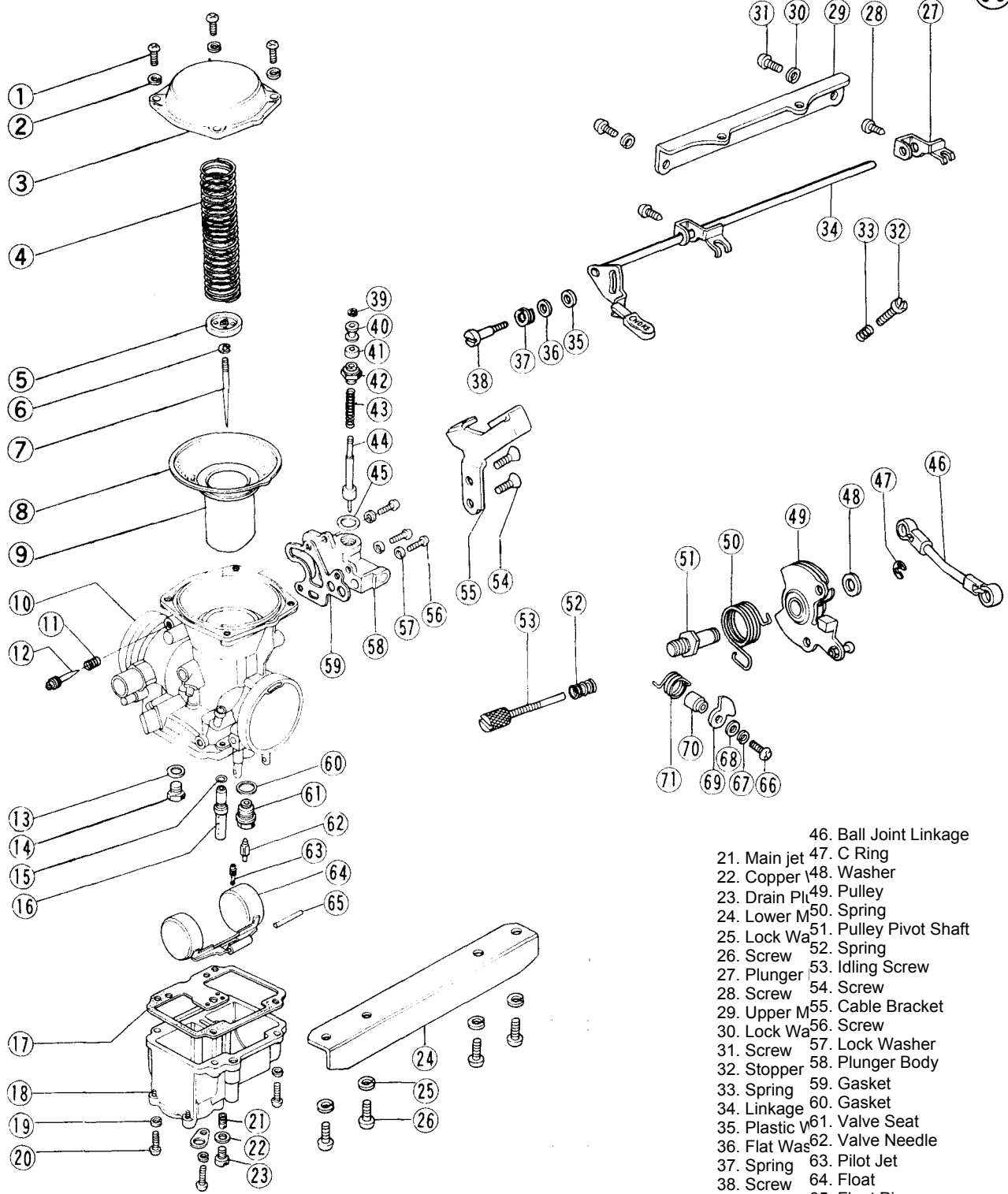


Carburetor

DISASSEMBLY 35



- | | | | |
|---------------------|-----------------|--------------------|------------------------|
| 1. Screw | 11. Spring | 21. Main jet | 46. Ball Joint Linkage |
| 2. Lock Washer | 12. Pilot Screw | 22. Copper Washer | 47. C Ring |
| 3. Cover | 13. Gasket | 23. Drain Plug | 48. Washer |
| 4. Spring | 14. Plug | 24. Lower Main Jet | 49. Pulley |
| 5. Spring Seat | 15. O Ring | 25. Lock Washer | 50. Spring |
| 6. Clip | 16. Needle Jet | 26. Screw | 51. Pulley Pivot Shaft |
| 7. Jet Needle | 17. Gasket | 27. Plunger | 52. Spring |
| 8. Diaphragm | 18. Float Bowl | 28. Screw | 53. Idling Screw |
| 9. Vacuum Piston | 19. Lock Washer | 29. Upper Main Jet | 54. Screw |
| 10. Carburetor Body | 20. Screw | 30. Lock Washer | 55. Cable Bracket |
| | | 31. Screw | 56. Screw |
| | | 32. Stopper | 57. Lock Washer |
| | | 33. Spring | 58. Plunger Body |
| | | 34. Linkage | 59. Gasket |
| | | 35. Plastic Valve | 60. Gasket |
| | | 36. Flat Washer | 61. Valve Seat |
| | | 37. Spring | 62. Valve Needle |
| | | 38. Screw | 63. Pilot Jet |
| | | 39. Clip | 64. Float |
| | | 40. Bush | 65. Float Pin |
| | | 41. Dust Seal | 66. Screw |
| | | 42. Plunger | 67. Lock Washer |
| | | 43. Spring | 68. Flat Washer |
| | | 44. Starter Pin | 69. Cam |
| | | 45. Gasket | 70. Collar |
| | | | 71. Spring |